

ANNUAL ACTIVITY REPORT

2025-2026

TABLE OF CONTENTS

- 4 Gift of Sight
- 6 Paediatric Cataract
- 8 A Healthier Future
- 10 Restoring Mobility
- 12 Transforming Communities
- 14 Unlocking Potential
- 16 Building Futures
- 18 Shukran Academy
- 19 Nurturing Young Lives
- 20 Strong Partnership & Lasting Impact
- 21 Brighter Futures
- 22 Developing Communities
- 23 Enterprise and Economic Empowerment
- 26 Tackling Food Insecurity
- 28 Discharging Your Sadaqah
- 29 Qurbani
- 30 Supporting Vulnerable Households
- 31 Access to Clean Water
- 32 Providing Decent Homes
- 34 Protecting the Environment
- 36 Photos
- 38 Summary Update
- 39 Share the Blessing (Ramadhan 2026)

CHAIRMAN'S FORWARD

It is with gratitude to The Almighty that I present the **2025–2026 Key Activity Report of Malawi Relief Fund UK**.

The past year has brought continued economic hardship, rising costs, and widespread food insecurity across Malawi. According to the **2025 Global Report on Food Crises**, **6.8 million people**—over one-third of the population—are unable to meet their basic food needs. This reality reinforces the urgent responsibility we share to serve those in need with compassion and resolve.

Guided by the Islamic principle of seeking knowledge, our work remains firmly rooted in **sustainable, community-led development**. We believe education is a powerful means of breaking the cycle of poverty. Through **Maone Technical College**, scholarships, teacher training, and school sponsorships, we are empowering individuals with skills, dignity, and hope for a better future.

Alongside education, we continue to prioritise access to healthcare, clean water, and safe housing. This year, our clinic in **Chia, Nkhotakota** treated over **3,000 patients**, while our **Gift of Sight Programme** restored vision to **5,600 individuals** through free cataract operations.

We remain committed to our **100% donation policy**, ensuring every contribution directly benefits those we serve. I extend my sincere thanks to our donors, supporters, volunteers, trustees, and staff, and in particular to our Country Co-ordinator, **Brother Yakub Valli**, for his dedication.

May The Almighty accept these efforts and enable us, with your continued support, to bring dignity, relief, and lasting change to the people of Malawi.



AND READING
GLASSES
STYLISH AND
COMFORTABLE



IMMEDIATE
DELIVERY
SERVICES

IMPACT

- Improved quality of life and well-being
- Regain independence
- Improved mobility for daily chores
- Able to work and sustain their families
- Restored dignity

GIFT OF SIGHT

MRF's the Gift of Sight Programme addresses the critical issue of preventable blindness in Malawi.

Malawi faces a significant public health challenge, with one of the highest levels of preventable blindness in the world. Over 160,000 Malawians suffer from low vision due to cataracts, a condition that is entirely treatable with a simple, low-cost surgical procedure.

However, for many, this life-changing surgery remains unaffordable and out of reach due to financial and geographical barriers.

The Gift of Sight Programme works to bridge this gap, ensuring that these surgeries are accessible to the individuals who need them most, providing free cataract surgery to almost 6,000 beneficiaries.

MRF's Gift of Sight Programme exemplifies its unwavering dedication to improving access to healthcare in under-resourced communities.

By providing a simple yet powerful intervention, MRF is not only restoring vision but also unlocking potential, restoring dignity, and creating opportunities for a brighter future and enabling thousands of people to regain their vision and live fuller, more independent.

Programme Outputs and Cost

Delivered **5,377 cataract operations**

Delivered **350 paediatric cataract operations**

Treated **18,500 patients with other eye related conditions**

Cost £45

RELIEF FUND UK

Striving to relieve poverty

Gift of Sight

Malawi Relief

Fund UK

www.malawirelief.org

**PAEDIATRIC CATARACT
OPERATIONS**

Supported by

DONORS OF MALAWI

RELIEF FUND UK

IMPACT

- **Improved educational access:** Restored vision enables children to attend school, learn effectively, and reach their academic potential.
- **Increased economic productivity:** likely to gain employment and contribute economically as adults.
- **Reduced family burden:** Families are relieved from the long-term caregiving demands associated with childhood blindness.
- **Enhanced social inclusion:** Children with restored vision can participate fully in community and social life.
- **Long-term health system value:** Early intervention prevents lifelong disability, reducing future healthcare and social support costs.

PAEDIATRIC CATARACT

The Malawi Relief Fund (MRF) Gift of Sight programme, which provides free cataract surgery to almost 6,000 adults each year, delivered two paediatric cataract programmes this year. This represents a significant step forward in addressing the unmet eye-care needs of children in the country.

In partnership with Lions Eye Hospital in Zomba, the surgeries were carried out by visiting ophthalmologists with expertise in paediatric cataract care. Across the two programmes, a total of 100 children received sight-restoring cataract surgery.

The success of a paediatric cataract programme is measured not only by the number of children operated on, but by the many productive years of life restored. With life expectancy in Malawi at approximately 67.7 years, the impact of cataract surgery for a child operated on at the age of six can extend for more than 60 years. This represents decades of improved education, independence, and economic participation that would otherwise have been lost.

The programme provided comprehensive support, including community screening, transportation to and from the hospital, accommodation during treatment, and meals for both the children and their guardians. This holistic approach ensured that financial and logistical barriers did not prevent children from accessing life-changing eye care.





IMPACT

- **Treating almost 3,000 people every month**
- **Lives saved through timely treatment** of malaria, diarrhoeal disease, respiratory infections, and other preventable conditions
- **Improved child survival**, with thousands of under-five children receiving timely care and monitoring
- **Reduced maternal risk**, as women can now access healthcare without undertaking long and dangerous journeys
- **Lower financial burden on families**, who no longer need to pay for transport to distant facilities
- **Stronger community resilience**, with a dependable local health service supporting overall wellbeing



A HEALTHIER FUTURE

For families in rural Malawi, access to healthcare can be the difference between life and death. Long distances, limited medical facilities, staff shortages, and poverty mean that many people are unable to reach care when they need it most.

The **Shukran Clinic in Chia** was established to change this reality. Since opening in **May 2023**, the clinic has already provided essential medical care to over **46,000 patients**, including **13,500 children under the age of five**. For many, this clinic has been their first—and only—access to healthcare.

The nearest alternative facility is **12 kilometres away**, a journey that is often impossible for pregnant women, sick children, and the elderly. Some patients must even cross the lake by boat to seek treatment. Without local care, preventable illnesses such as **malaria, cholera, and dysentery** can quickly become life-threatening.

The need is growing. Mothers and young children are especially vulnerable, and there is an urgent demand for specialised services.

To meet this need, we are planning the construction of an **Under-5s Clinic** and a **Maternity Unit**, which will provide safe deliveries, early childhood care, and life-saving treatment close to home.

With your support, we can begin construction later this year and ensure that no mother or child is left without care simply because of where they live.

Your generosity will help save lives, strengthen this community, and create a healthier future for generations to come.

Donate any amount - Zakat Sadaqah and Lillah



IMPACT

- Increased Mobility
- Enhanced Quality of Life
- Greater Independence
- Reduced burden on care givers
- Social Inclusion



RESTORING MOBILITY

Mobility is a basic human right—yet for many people in rural Malawi, it remains out of reach. For individuals living with disabilities or severe mobility challenges, the inability to move freely affects every aspect of life, limiting independence, dignity, and social inclusion.

Wheelchairs: Independence Within Reach

In rural villages, most families simply cannot afford a wheelchair. Without one, people are often confined to their homes, unable to access healthcare, education, or community life.

Thanks to the generosity of our supporters, MRF has already provided 60 wheelchairs, transforming lives by restoring independence, improving wellbeing, and enabling individuals to re-engage with their communities.

Tricycles: Freedom to Move Forward

In some communities, people with disabilities are forced to rely on makeshift supports—or even crawl—to get from place to place. Mobility tricycles offer a life-changing solution, allowing individuals to travel independently and with dignity. These tricycles empower marginalised people to participate fully in daily life, access essential services, and rebuild their confidence and self-worth.

Your Support Makes This Possible

Every wheelchair and tricycle represents more than mobility—it represents dignity, inclusion, and hope.

With your support, we can continue to remove barriers, restore independence, and change lives across rural Malawi.

Outputs and Cost

Last year distributed 100 Wheelchairs and 60 Mobility Tricycles

Cost:

Wheelchair £100

Tricycles £175

Zakat, Sadaqah and Lillah



IMPACT

- 1,000+ women trained as qualified teachers
- Reduced teacher shortages in rural schools
- Improved classroom learning and reduced overcrowding
- Higher attendance and retention among pupils
- Empowered women with stable careers and leadership roles
- Long-term impact on thousands of children and communities
- Sustained 1000+ families to break the cycle of poverty

TRANSFORMING COMMUNITIES

Education is vital for sustainable development, yet many children in rural Malawi lack access to quality schooling due to a severe shortage of trained teachers. Overcrowded classrooms and understaffed schools make learning difficult, and only 38% of children progress to secondary education.

Our Response: Training Teachers, Changing Lives

MRF tackles this challenge by investing in teacher training programmes that strengthen education systems and empower women as agents of change.

Through support for the **Mariam Girls Teacher Training College**, MRF have sponsored over 1,000 women at Mariam Girls Teacher Training College to graduate as primary school teachers, gaining stable careers while helping to reduce teacher shortages and overcrowded classrooms in rural schools.

Your Support Makes Education Possible

By supporting teacher training, you help children stay in school, empower women, and build stronger communities.

Please give today and help create a brighter future for Malawi—one teacher, one classroom, and one child at a time.

Programme Outputs

Sponsored **150 students last year**

Cost

Scholarship £450 per annum

Donate: Zakat, Sadaqah, Lillah



**MALAWI
RELIEF
FUND UK**
Striving to relieve poverty

Striving

to

Relieve

Poverty

MALAWI OFFICE

P.O. Box 51872, Limbe Malawi

Tel: +265 (0) 868 843 338

admin@malawirelief.org

UK OFFICE

malawi relief fund uk, 63 / 65 victoria street

Richmond, TW9 1DN UK

Tel: +44 (0) 208 812 555

www.malawirelief.org | info@malawirelief.org

IMPACT

- 380 students supported to pursue university and tertiary education
- Increased access to higher education for underrepresented and marginalised groups
- Empowered women and girls to achieve their educational and career goals
- Improved career prospects and economic opportunities for graduates
- Strengthened communities as educated graduates contribute to local development and the economy
- Long-term change by creating future leaders and role models across Malawi



UNLOCKING POTENTIAL

Malawi faces one of the lowest tertiary education enrolment rates in the world. For many, especially those from **marginalised and underrepresented communities**, the dream of higher education remains out of reach due to financial constraints, gender inequality, and geographic barriers.

The MRF Talha Scholarship Programme

MRF's Talha Scholarship Programme is transforming lives by breaking down these barriers. Through financial support and mentorship, we empower disadvantaged students to pursue university and tertiary education, helping them unlock their potential and build brighter futures.

To date, **380 students have received scholarships**, gaining access to education that would otherwise have been impossible. These opportunities not only change individual lives but also strengthen families, communities, and Malawi's future.

Education is one of the most powerful investments we can make. By supporting the MRF Scholarship Programme, you are **helping create a more equitable, inclusive, and prosperous Malawi**—one student at a time.

Your support can make higher education a reality for even more talented and deserving young people.

Programme Outputs

380 students received scholarships

Cost:

Scholarship £1,200 per annum including living expenses

Donate Zakat, Sadaqah and Lillah



IMPACT

- Vocational and life skills to prepare student for the world of work
- Contribute to the shortage of **skilled workforce** in the country
- **Improve the skill base** in construction industry
- Ensure **equal access and opportunity** for marginalised and hard-to-reach communities.
- Providing informal **skills training for marginalised and rural learners** empowered to secure employment or start their own business



BUILDING FUTURES

Maone Technical College is a pioneering vocational institution dedicated to training skilled artisans ready to meet the demands of today's workforce.

Our mission is to provide **high-quality vocational education** and support to young people and adults, helping them gain the skills, confidence, and attitudes needed to thrive in their careers and contribute to their communities. All training takes place in a **nurturing Islamic environment** that emphasizes values such as discipline, mutual care, and respect.

Our programs include: **Bricklaying, Carpentry & Joinery, Plumbing, Electrical Installation, ICT and Horticulture.** We are also expanding into **Early Years Education** to broaden our impact.

Reaching the Marginalised

Through **four satellite centres**, we provide informal courses in bricklaying, carpentry, joinery, and tailoring. These programs **target marginalised individuals**, especially in rural areas, giving people without formal qualifications the **skills to secure employment or start their own businesses.**

Transforming Lives and Communities

By equipping individuals with practical skills and vocational training, Maone Technical College empowers people to **build better futures**, support their families, and strengthen the **economic and civic life of their communities.**

Outputs

196 Students trained

96 Students trained at Informal centres

Donate Any Amount - Zakat, Sadaqah and Lillah

SHUKRAN ACADEMY



Shukran Academy remains MRF's flagship programme, providing a safe, nurturing home for 95 orphaned children. Through a holistic boarding-school model, children receive quality secular and religious education alongside comprehensive care for their physical, emotional, and spiritual wellbeing.

All essential needs are met on campus, including meals, accommodation, healthcare, education, and welfare support, creating a stable environment where children can learn and thrive.

With a strong focus on long-term opportunity, 95 children are now enrolled in fully funded secondary boarding schools. Thanks to donor generosity, Shukran Academy continues to transform lives—offering dignity, stability, and hope for a brighter future.



NURTURING YOUNG LIVES



Early childhood is a critical foundation for lifelong learning and wellbeing, yet many young children in Malawi face malnutrition, poor health, and limited access to education.

MRF currently supports 14 Early Childhood Development centres in rural communities, with plans to open three more. These centres provide safe, nurturing spaces for children aged 0–5, supporting their physical, cognitive, and emotional development.

Your support helps break the cycle of poverty by giving children the care, nutrition, and early education they need to thrive—strengthening families and communities across rural Malawi.

IMPACT

- Nutrition & Health: Daily meals combat malnutrition and food insecurity
- Early Learning: Activities build essential skills and prepare children for school
- Empowering Families: Parent programs improve health awareness and skills, strengthening communities

Outputs and Cost

900 children attend ECD's
30 staff trained in early years

Cost to Sponsor a Child at ECD
£30 per annum
Sponsor a Uniform for £10 per
child

STRONG PARTNERSHIP & LASTING IMPACT



Education is central to our mission and a powerful driver of long-term opportunity. Thanks to the generosity of our donors and the **partnership of Blackburn College**, we have completed the Blackburn College International Nursery in Malawi—a safe, nurturing space giving young children access to early learning for the first time.

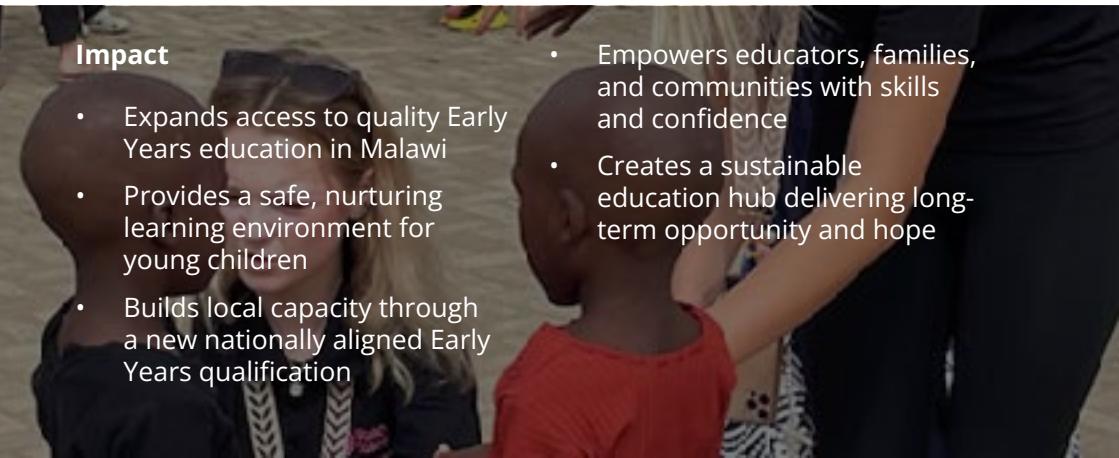
To address the national shortage of Early Years training, we are working with Blackburn College to develop a new Early Years qualification

aligned with Malawi's national strategy. This initiative will build local expertise, strengthen childcare provision, and ensure the nursery operates as a sustainable training hub.

The impact is already visible: children accessing early education, communities receiving vital support, and a new generation of educators gaining skills and confidence—creating a lasting educational legacy for future generations.

Impact

- Expands access to quality Early Years education in Malawi
- Provides a safe, nurturing learning environment for young children
- Builds local capacity through a new nationally aligned Early Years qualification
- Empowers educators, families, and communities with skills and confidence
- Creates a sustainable education hub delivering long-term opportunity and hope



BRIGHTER FUTURES



In Malawi, the cost of secondary education prevents many children from continuing their studies. Only 35% of students progress from primary to secondary school, limiting life opportunities and reinforcing poverty.

Through our Secondary School Bursaries Programme, we remove these financial barriers. Last year, donor support enabled 240 students to attend secondary school, covering fees, learning materials, uniforms, and essential costs.

Thanks to your generosity, motivated young people are staying in school and building brighter futures.

IMPACT

- Removes financial barriers so students can stay in school
- Allows learners to focus on education and build confidence
- Improves long-term outcomes for students and their communities
- Strengthens Malawi's future through a skilled, empowered generation

Cost

£80 per student/annum - day school
£350 per annum at a boarding school
Donate Zakat, Sadaqa, Lillah

DEVELOPING COMMUNITIES



Our **94 community hubs** serve as vital centres for worship, education, and personal development, each housing a masjid and madrassah that provide safe spaces for faith and learning. **Over 4,500 children benefit from our makatibs**, gaining spiritual guidance, life skills, and strong Islamic values.

Beyond worship and education, the hubs promote community wellbeing through adult learning and empowerment programmes, including tailoring and vocational skills such as carpentry and bricklaying. Fourteen centres also operate Early Years Children's Centres, supporting holistic development and school readiness.

IMPACT

- Over 4,500 children receive structured religious education, strengthening discipline, confidence, and wellbeing.
- Adult empowerment programmes develop practical vocational skills, improving employability and income opportunities.
- Communities benefit from lifelong learning, ethical values, civic responsibility, and stronger social cohesion.

Cost

£30 per child per annum
Donate Zakat, Sadaqah and Lillah

ENTERPRISE AND ECONOMIC EMPOWERMENT



The Empowering Women into Business Programme helps women build sustainable livelihoods through entrepreneurship, promoting financial independence and long-term resilience. Participants receive comprehensive support, including business training, mentoring, seed funding, and ongoing guidance.

Supporting enterprises such as bakeries, salons, cafés, and market stalls, the programme enables women to earn locally. To date, 50 women have established businesses and **12 have had new shops constructed**, strengthening household incomes and contributing to local economies.

This programme shows how investing in women's entrepreneurship creates lasting, community-wide impact.

IMPACT

- 100% of beneficiaries received training, mentoring, and start-up capital
- Increased household income and financial stability
- Improved financial inclusion and business skills
- Sustainable small enterprises established
- Enhanced confidence, leadership, and financial control
- Local economic growth and job creation
- Ongoing monitoring to ensure business viability
- Capacity built through **12 shop units constructed**

Donate any amount - Zakat, Sadaqah and Lillah

ECONOMIC EMPOWERMENT



Bicycle Taxi Programme

The Bicycle Taxi Programme equips individuals with adapted passenger bicycles, enabling them to operate taxi services and transport goods within their communities. Beyond providing a livelihood, the bicycles improve mobility, reduce travel costs, and increase access to economic opportunities.

To date, **200 bicycles have been distributed**, helping beneficiaries earn a steady income, support their families, and gain greater self-reliance and dignity. This cost-effective initiative delivers immediate economic impact while fostering long-term empowerment.

IMPACT

- Boosts income, financial stability, and self-reliance
- Asset ownership (bicycles and sewing machines) restores dignity, confidence, and control over livelihoods
- Strengthens family wellbeing through improved food security, education, and household stability



Costs

Bicycle Taxi

£140 Zakat Sadaqah, Lillah

Women Development

£150 Zakat Sadaqah, Lillah

Fishing Boat

£600 Zakat Sadaqah, Lillah



Women's Development Programme

The Women's Development Programme empowers women—especially widows—by providing practical tailoring skills and essential life education. Alongside vocational training, participants gain knowledge in childcare and social skills, promoting economic independence and household wellbeing.

Delivered in remote rural areas, the programme ensures access for women in underserved communities. Each graduate receives a sewing machine and starter kit, enabling immediate income generation and sustainable livelihoods.

This year, **160 women completed the programme**, gaining the skills, resources, and confidence to support their families and build a more secure future.



Fishing Boats Programme

The Fishing Boats Programme provides vulnerable fishermen with their own boats, enabling greater control over their livelihoods and a reliable, sustainable income. Boat ownership reduces costs, increases productivity and earnings, and improves food security and financial stability for fishing families.

By promoting asset ownership, the programme strengthens dignity, resilience, and long-term self-reliance within coastal communities, transforming donor support into lasting impact.

IMPACT

- Asset ownership boosts income, self-reliance, and livelihoods
- Enhances productivity, confidence, and family wellbeing
- Strengthens community resilience and reduces vulnerability

TACKLING FOOD INSECURITY



Masjid Iftari

Our Masjid Iftari programme offers cooked meals prepared by local community members at mosques, providing a collective Iftar for an average of 40-50 people. This initiative not only serves to nourish those fasting but also fosters a sense of community, as it encourages local villagers to come together in both the preparation and enjoyment of the meal.

We **provided 12,000 meals each day across 300 centres**, bringing people together to share in the spirit of unity and celebration during Ramadhan.

Delivered

450,000 iftar meals at 300 centres

Cost - Masjid Iftar

£15 per day - Zakat, Sadaqah, Lillah

Ramadhan Food Packs

As part of our ongoing efforts to address food insecurity, our Iftar food packs provide families with essential food during the blessed month of Ramadhan.

This initiative helps ensure that families have the nourishment they need to observe the fast with dignity and strength. During this period, we distributed **24,000 food packs to households**, offering critical support to those in need.

Delivered

24,000 households provided food packs

Cost

£35 per pack

Donate Lillah, Zakat, Sadaqa

Eid Food Packs

In line with Islamic guidance, all Sadaqat-ul-Fitr donations were distributed before Eid, helping vulnerable families complete their fasts and celebrate with dignity.

Eid Food Packs containing essential food items were delivered to families in remote rural villages, ensuring that those most in need were not excluded from the blessings and joy of Eid.

This year, **10,000 Eid Food Packs** containing essential items were delivered to families in remote villages, enabling them to prepare meals and share in the joy of Eid.

Your Sadaqat-ul-Fitr provides immediate relief, supports families in need, and fulfills a vital religious duty. Please donate before the 26th of Ramadan to ensure timely delivery.

Cost - Eid Food Pack
£15 - Zakat, Sadaqah, Lillah

Eid Gifts

Eid is a day of joy, especially for children. The Eid Gifts Programme reflects the prophetic teaching of spreading happiness and kindness, particularly among the young and vulnerable.

This year, **10,000 children received Eid gifts**, ensuring they could experience the excitement, inclusion, and happiness of Eid alongside their peers.

For a contribution of just £3.00 per gift, donors helped create moments of joy that left a lasting emotional impact.

This simple yet meaningful act embodies the values of generosity, mercy, and community, allowing donors to share the blessings of Eid with children who would otherwise go without.

Cost - Eid Gift
£3 - Zakat, Sadaqah, Lillah



DISCHARGING YOUR SADAQA



Sadaqa Programme

Our Sadaqa Programmes ensure that donations—whether voluntary charity, animal sacrifices, or food packs—reach those most in need, fulfilling the true spirit of giving, compassion, and mercy. Sadaqa can be offered anytime to seek blessings, express gratitude, or provide relief, turning donors' intentions into meaningful action that benefits vulnerable families. Timely distribution ensures immediate impact, with feedback provided to donors.

Aqeeqah and Aqeeqah Dawat

Aqeeqah—the Sunnah sacrifice in gratitude for a newborn—is facilitated through our programme,

with the meat distributed to impoverished families or prepared as meals. This allows donors to fulfil a cherished religious practice while supporting nourishment, dignity, and wellbeing in the community, creating lasting spiritual and social impact.

Impact

- Discharge of your religious obligation
- Feeding the poor and needy
- Able to express gratitude with confidence
- Make lasting spiritual and social impact with your donation

Cost

Sadaqa - £35

Aqeeqah - for cooked meal Aqeeqah contact a team member

QURBANI



Our Qurbani Programme delivers meat to families in the most remote and underserved areas during Eid, offering a rare opportunity for beneficiaries to enjoy this special blessing.

Beyond providing nourishment, the programme fosters dignity, celebration, and inclusion, allowing families to share in the joy of Eid. Guided by the prophetic teachings of generosity, donor contributions create lasting spiritual and social impact for the most vulnerable.

Outputs

Delivered 6,213 Sadaqas and Qurbanis

Cost

Qurbani - For prices contact a team member



SUPPORTING VULNERABLE HOUSEHOLDS



Direct Support Programme

The Direct Support Programme helps alleviate poverty and food insecurity for over 450 vulnerable households in remote villages. Participating families receive monthly packages of essential food and household items, along with targeted financial support for urgent needs such as healthcare and education.

By providing consistent, reliable assistance, the DSP enables families to meet basic needs, improve quality of life, and regain stability, turning donor contributions into tangible, meaningful impact.

Cost

£30 per pack - Zakat, Sadaqah, Lillah

Impact

- 450+ vulnerable households supported with monthly essential food and household items
- Improved food security, ensuring vulnerable families have consistent access to nutrition
- Improved health and Well-being ensuring the families are food secure to improve health and well-being
- Enhanced household stability, helping families sustain themselves in remote and underserved communities
- Direct donor impact, translating contributions into immediate relief and long-term resilience

ACCESS TO CLEAN WATER



In rural Malawi, families still rely on unsafe water sources, putting children at risk of preventable, life-threatening disease.

With your support, MRF is changing this reality. Over the past year, we **drilled 87 water points** and **constructed 560 household latrines**, providing clean water, improving sanitation, and reducing the spread of waterborne illness in vulnerable communities.

Access to clean water means healthier children, stronger families, and communities able to thrive with dignity. A water point or latrine is more than infrastructure—it is protection, opportunity, and hope. Your partnership is saving lives and transforming communities.

Impact

- Almost 8,000 people having access to clean water
- 560 households have access to latrines and wash room
- Reduced walking distance to water points
- Improved hygiene
- Water for livestock
- Improve health and well-being

Cost

Shallow well Handpump £750
Borehole £1800

Donate Lillah and Sadaqa

PROVIDING DECENT HOMES

Nearly 82% of Malawi's population lives in fragile mud houses with thatched roofs, offering little protection from extreme weather and leaving families at risk of illness and insecurity.

The Shelter Programme provides safe, durable homes for vulnerable families, alongside washrooms and latrines to improve sanitation and hygiene. This holistic approach enhances health, dignity, and stability, helping families break the cycle of poverty and build resilient futures.

Your support provides safe homes, restores dignity, and strengthens rural communities across Malawi.

Outputs

Constructed 418 homes and WC/
washrooms

Cost

From £1,850

Donate Zakat, Sadaqah and Lillah

Impact

- Safe, durable homes built for vulnerable rural families
- Protection from harsh weather, including heavy rains and extreme temperatures
- Washrooms and latrines provided, improving hygiene and sanitation
- Reduced health risks linked to poor housing and sanitation and improved quality of life
- Restored dignity and security for families
- Stronger, more resilient communities built for the future



**INVESTING
IN THE
ENVIRONMENT
PLANTING
TREES**

malawirelie
www.malawirelie

MA
REL
FUN



PROTECTING THE ENVIRONMENT

Malawi is losing an estimated 33,000 hectares of forest every year, leading to land degradation, loss of wildlife habitats, and growing challenges for farming communities.

Planting trees offers a proven solution. Trees improve soil fertility, increase crop yields, provide firewood and nutritious fruit, and create income opportunities for families. They play a vital role in reducing poverty and strengthening food security.

To help address this crisis, Malawi Relief Fund UK has planted over 10,000 fruit and indigenous trees, supporting farmers while protecting the environment for future generations.

For just £1, you can plant a tree and contribute to lasting environmental and community impact.

Donate One Pound, One Tree, One Lasting Impact, One Sadaq-e-jariah

The Prophet Muhammad said:

"If a Muslim plants a tree or sows seeds, and a person, animal or bird eats from it, it is counted as charity for them."

{Sahih al-Bukhari}







SUMMARY UPDATE

21,350
Patients
treated
for eye
conditions

5,650
Cataract
Operations

30,380
Patients
treated at
clinics

26,000
Food packs
distributed

87
Water
points
provided

205
Bicycle taxis
donated

60
Wheelchairs
donated

50
Tricycles
donated

150
Teachers
trained

83
Students
supported
with
scholarships

292
Students
received
vocational
training

4,500
Children
attending
Maktab

380
Children
sponsored
at school

95
Students at
Shukran

416
houses and
WC/
Washrooms

6,213
Sadaqa &
Qurbani
fulfilled

Share The Blessings

IFTAR PACK

£35

ZISIL

MASJID
IFTAAR

£15

PER DAY

ZISIL

EID PACK

£15

ZISILIF

EID GIFT

£3

ZISIL



Scan
to
Donate

HOW TO DONATE

Bank Transfer

Account Name: Malawi Relief
Fund UK

Account No: 14210959

Sort Code: 01-00-85

IBAN: GB58 NWBK 0100 8514
2109 32

BIC: NWBKGB2L

Online

www.malawirelief.org

Donation Point

First Floor, 63A Victoria Street,
Blackburn, BB1 6DN

Donate Zakat, Sadaqah & Lillah
with confidence. 100% of
donations used on aid to the
poor.

Local Contacts

Blackburn

Faruk Bharucha 07870 599753
Ismail Valli 07855 856165
Suleman Dudhia 07727 060723

Bolton

Yusuf Mangera 07866 019239
Gaffar Patel 07801 819701
Altaf Limbada 07834 269553
Ibrahim Dakri 07933 805085

London

Yunus Bobat 07939 577574

Manchester

Musa Dudha 07957 107545
Zunaid Chunara 07817 517958

Yorkshire

Maulana Habil 07522 290506
Hasim Valli 07984 478677
Iqbal Bhana 07831 391814
Hamid Makda 07790 523928
Qari Ismail Makda 07761 847184
Hafiz Yusuf Makda 07890 178184
Sheraz Sidat 07533 285066

Leicester

Shokat Patel 07702 333933
Iqbal Lambat 07886 275325

Birmingham

Nazir Teladia 07764 565514

Malawi

Yakub Valli +265 888 827 058

Remember to increase your donation by 25%
Simply complete the Gift Aid form.